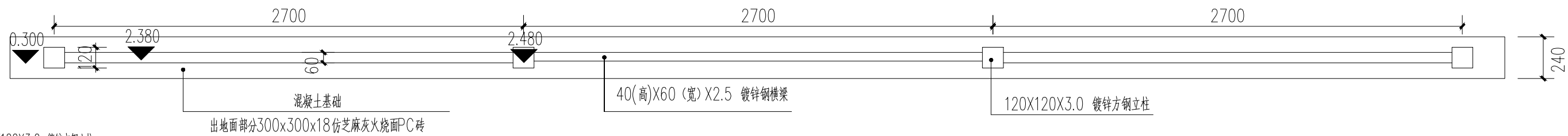


Technical drawing of a metal fence assembly showing three panels. Each panel is 2700mm wide and 1590mm high. The panels are made of 125x18mm metal slats spaced at 2250mm. The fence is supported by a concrete foundation and a 40x60mm zinc-plated steel beam. The drawing includes dimensions for the panels, slats, and foundation, as well as a callout for the connection detail (3) showing a hidden connection with F22 bolts. The drawing is labeled '1' at the top and bottom.

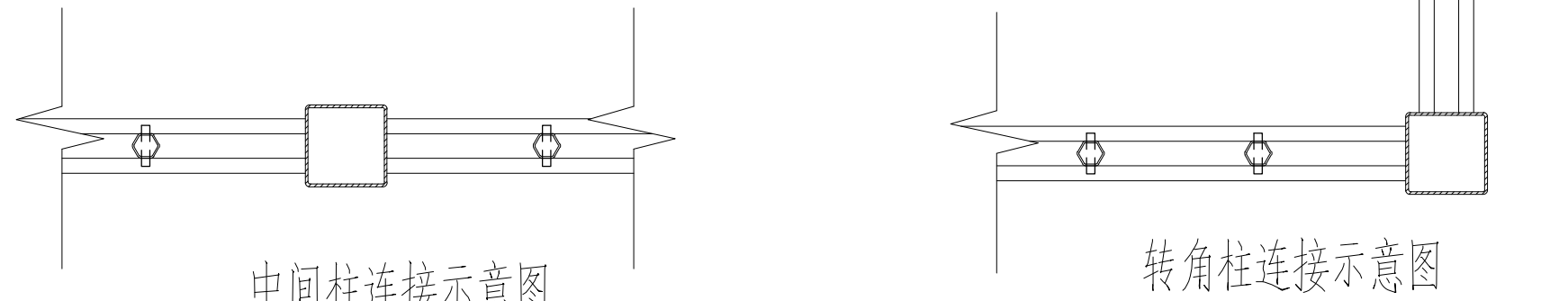
Dimensions and components shown:

- Panel width: 2700mm
- Panel height: 1590mm
- Slat width: 125mm
- Slat spacing: 18mm
- Slat length: 2250mm
- Foundation: 300x300x18mm grey brick
- Support beam: 40(高)x60(宽)x2.5mm zinc-plated steel beam
- Connection detail (3): Hidden connection,做法参12J003, 连接件由专家厂家优化定制, 螺栓采用热镀锌
- Ground level: ±0.000 (室外地坪标高)

本工程围墙总长约732米  
围栏采用普通方钢管，制作完成后整体热镀锌，结束后去现场安装  
出地面混凝土部分每40M设置50mm变形缝一道，做法参14J936—1/AQ1  
钢栏杆部分，每50M设双立柱，双钢立柱之间间距50mm，不设置横向连接  
每20M预埋一根φ70钢管排水管，贴地面预埋

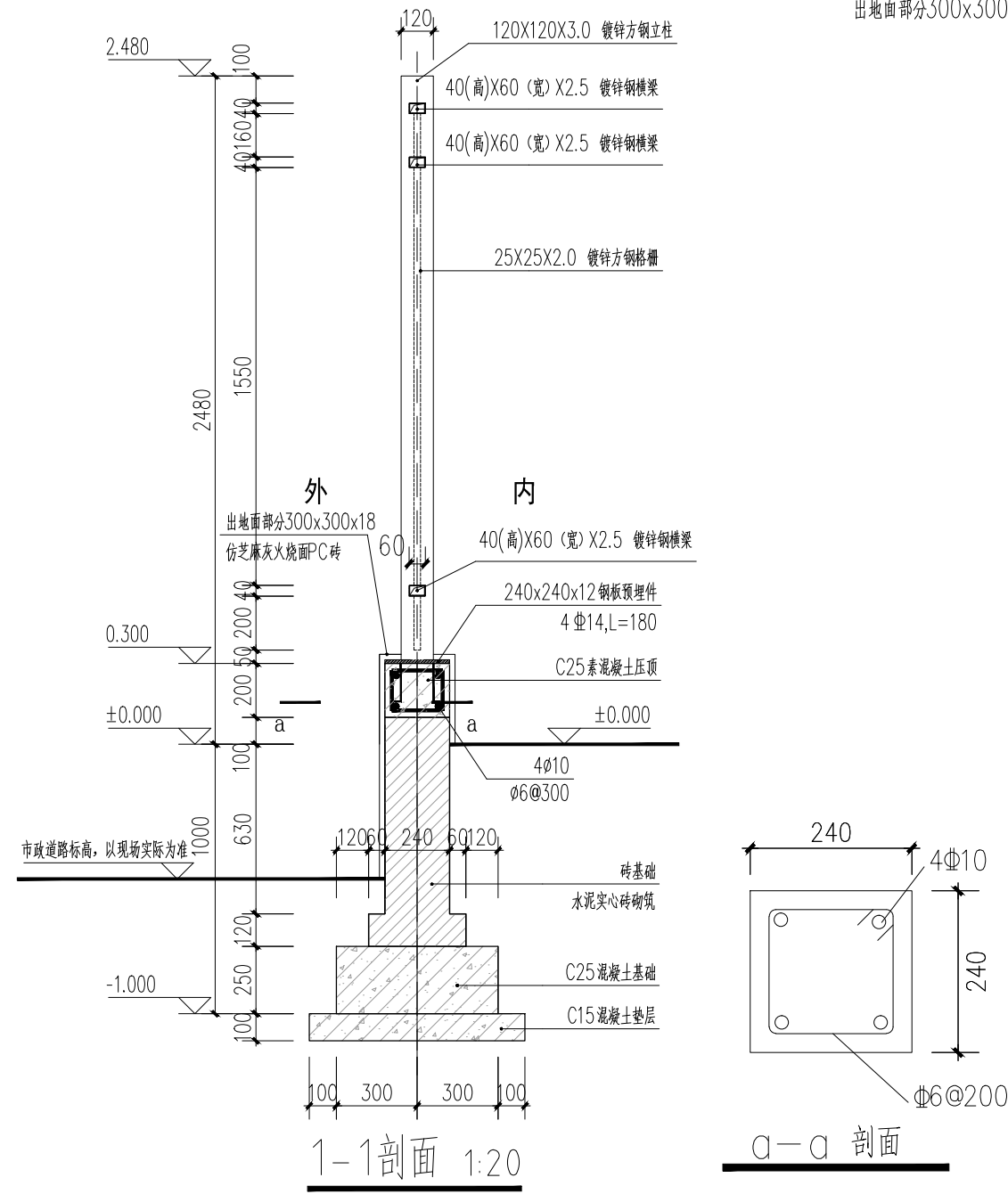


围墙平面标准段 1:25



### 中间柱连接示意图

注: 1. 本图中高程为相对标高, 相对临近物料完成面为土  
2. 方通间均为满焊, 焊缝锉平整体加工好后热镀锌处理外喷黑色氟碳漆  
3. 围墙正背立面做法相同。



0	施工图	2025.03
版本 REV	版本说明 DESCRIPTION	日期 DATE
注册执业印章 REGISTERED STAMP		
出图印章 PRINT STAMP		
<div>设计单位 DESIGNER</div> <div><div>信息产业电子第十一设计研究院科技工程股份有限公司 The IT Electronics Eleventh Design &amp; Research Institute Scientific and Technological Engineering Corporation Ltd. 综合甲级资质证书号：A151000523</div></div>		
<div>建设单位 CLIENT</div> <div>鑫兴绿色（南通）产业发展有限公司</div>		
<div>工程名称 PROJECT NAME</div> <div>集成电路标准厂房二期项目（M24003地块）</div>		
<div>图纸内容 DRAWING TITLE</div> <div>围墙平面、立面</div>		
设计 Designed By	冯文强	项目编号 Project No.
校对 Checked By	单国华	设计阶段 Des. Stage
审核 Reviewed By	陈翔	专业 Discipline
专业负责人 (Signature Personnel)	陈翔	比例 Scale
总设计师 Design Manager	贺奎田	张数 Sheet No.
项目负责人 Project Manager	周安非	
图号 Drawing No.	JCDL-WQ-2	02/02